



Sayward Forest Canoe Route

The canoe route is located in the heart of the Sayward Provincial Forest, named after pioneer logger and sawmill operator William P. Sayward.

The Sayward (or Bloedel) fire of 1938 burned much of the area, resulting in the first planting project in BC and the development of the seed orchard and nursery in Campbell River. In 1939, almost 800,000 seedlings were planted in one month – a huge accomplishment in those days.

Early logging in the Sayward Forest was done via an extensive network of railroads. Logging company employees and families were housed in different camps – one of the largest being the community of Camp 5 at the south end of Brewster Lake.

Sections of the portage trails are located on the old railgrades, and remnants of old train trestles can still be seen along the canoe route. With over fifty lakes and a multitude of developed campsites and trails, the Sayward Forest continues to be both a recreation destination and a working forest.

When travelling on logging roads, please drive carefully. Always give industrial traffic the right-of-way, drive with headlights on at all times, keep to your own side of the road, and park well off the travelled surface.

Approx. Portage Lengths	8.1 Km
Approx. Canoeing Lengths	39.3 Km
Approx. Route Length	47.4 Km



Back Country Etiquette

Enjoy the canoe route, the forest and your visit. Please:

- Be prepared.
- Pack out what you pack in.
- Do not damage vegetation.
- Leave your site cleaner than when you arrived.
- Keep your campfires in designated areas.
- Do not leave a fire unattended.
- Do not cut down live trees for firewood.
- Do not cut boughs for bedding.
- Do not disturb beaver dams as they help maintain water levels.
- If there are outhouses, please use them.
- Do not toss cigarette butts into the forest.



Safety

- Be ‘water wise’ and observe proper safety procedures.
- Don’t overload or stand up in a canoe.
- Tie gear to the thwarts and gunnels in case of an upset.
- Stay close to shore on big lakes and be prepared for high winds.
- Keep an eye out for deadheads and snags.
- Don’t let your canoe turn crossways in fast currents.
- Always wear a life jacket.
- Limited cell phone coverage.

Canoe Route Description

The majority of the lakes in the route remain ice free for most of the year. The preferred time for doing the route would be summer or early fall when conditions are drier.

The recommended direction to navigate the route is counter clockwise. The route can be accessed from many start points. Morton Lake Provincial Park offers a good start point with a spot to park your vehicle. With road access to many of the lakes, the route can be done in parts, or in whole. The entire route takes about 3-4 days and covers approximately 50 km.



Portage signs like this are located along the route to mark trail locations. Please stay on the trails so as not to disturb vegetation or create new routes.

Water levels during the drier summer months can become too shallow to canoe. When water levels are high, currents in the creeks can be tricky to navigate. Parts of the route at the south end of Brewster into Fry Lake contain rapids. During normal water levels, these rapids can be canoed. Always assess the route for obstacles before running the rapids.

Along the route you will find campsites that are marked as developed or rustic.



Developed sites generally have a picnic table, tent pads, a fire pit and a toilet.



Rustic sites are usually a small opening with a fire pit.



Drive-In Campsites are developed sites with vehicle access.



Sayward Forest Canoe Route

Please obey all posted signs, rules and regulations, respect others and enjoy your stay!

Ministry of Forests, Lands and Natural Resource Operations
Toll Free: 1-800-663-7867
www.gov.bc.ca/for

BC Parks
Toll Free: 1-800-689-9025
www.env.gov.bc.ca/bcparks

Emergency Services
Campbell River Hospital (911)
375 - 2nd Avenue, 250-850-2141

Campbell River RCMP
275 - South Dogwood St, 250-286-6221

Campbell River MoFLNRO
370 - South Dogwood St, 250-286-9300

Forest Fires
Please report all forest fires.
Phone toll-free: 1 800 663 5555

Be aware of the Fire Danger Rating before lighting a campfire.

For More Information
www.sitesandtrailsBC.ca



Recreation Sites and Trails **BC**

Sayward Forest Canoe Route

Visitors Map and Guide



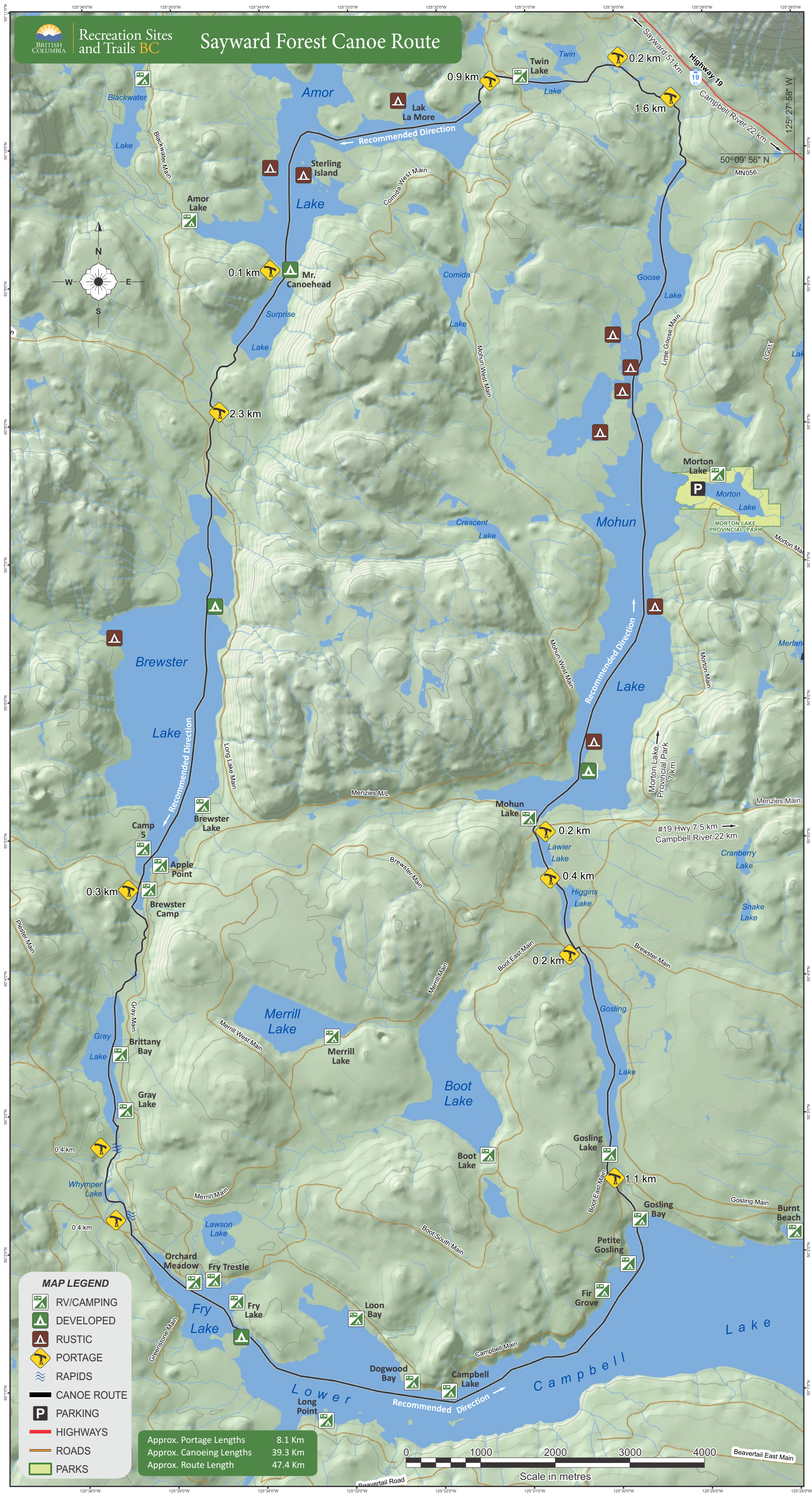


Recreation Sites and Trails **BC**



Recreation Sites
and Trails BC

Sayward Forest Canoe Route



MAP LEGEND

- RV/CAMPING
- DEVELOPED
- RUSTIC
- PORTAGE
- RAPIDS
- CANOE ROUTE
- PARKING
- HIGHWAYS
- ROADS
- PARKS

Approx. Portage Lengths	8.1 Km
Approx. Canoeing Lengths	39.3 Km
Approx. Route Length	47.4 Km

