

Woss Fire Lookout

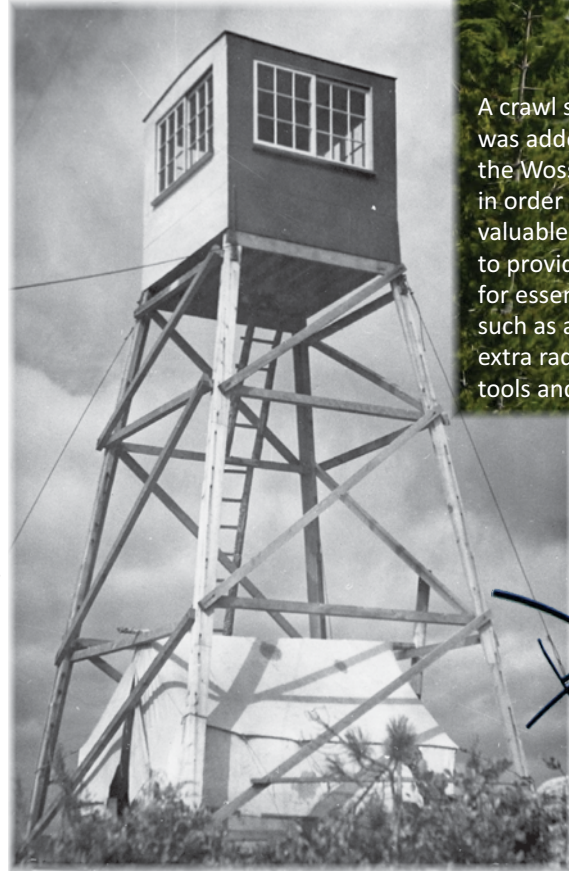
Historic fire detection systems in BC included a network of fire lookouts manned by appointed Lookoutmen for the duration of each fire season. At one time, over 300 fire lookouts dotted the landscape across the province. Early structures consisted of only a canvas tent, with or without an associated tower.

Over time, most tents were replaced with more permanent (and comfortable) structures based on standardized designs used by the BC Forest Service.

The Woss Lookout site was originally developed in 1948 by Canadian Forest Products Ltd. (Canfor), who constructed an access trail and erected a 20-25 foot tower with a plywood cupola. A tent was set up beneath the tower to provide accommodation. Each day, the Lookoutman would climb the ladder up to the tower and scan the surrounding forests for any sign of fire.

In 1950, the tent and tower were replaced with a permanent lookout structure based on a standard 1947 design. A pre-fabricated, hip-roof cabin served as the living quarters while a second storey cupola was set up for fire detection duties. This particular lookout design was chosen for its relatively light weight and portability, considering the limited access to the Woss site.

Throughout the next three decades, the lookout structure received regular maintenance as required.

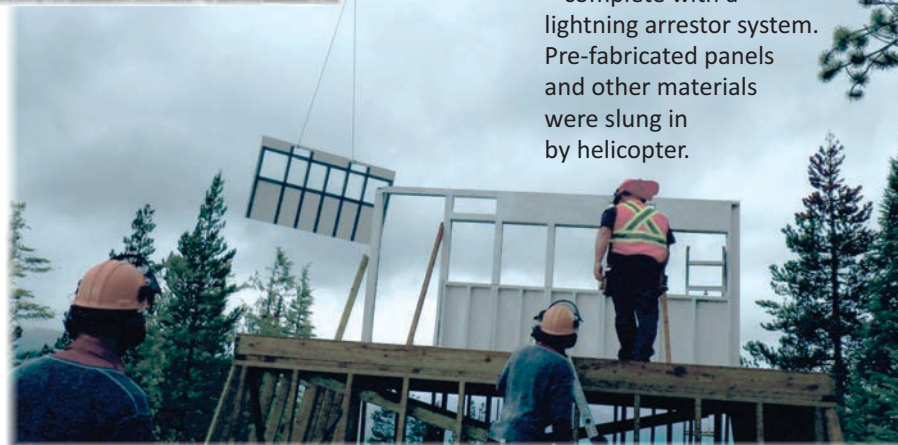


A crawl space was added to the Woss Lookout in order to gain valuable height and to provide storage space for essential equipment such as a water cistern, extra radio batteries, tools and other materials.



In 1987, due to modernization of fire detection, the Woss Lookout was deleted from the provincial fire protection system. With little to no maintenance, the structure soon fell into disrepair and eventually became unsafe and beyond restoring.

In 2013-2014, through the combined efforts of many agencies, organizations and volunteers, the 1950 lookout was removed from the site and replaced with a replica structure – complete with a lightning arrestor system. Pre-fabricated panels and other materials were slung in by helicopter.



Woss Fire Lookout Recreation Site

Please obey all posted signs, rules and regulations, respect others and enjoy your stay!

Recreation Sites and Trails BC has recently undertaken a project to restore abandoned fire lookouts and establish them as recreation sites to preserve the historical, cultural and heritage values of these spectacular areas and provide unique public recreation opportunities. During the field season of 2012, a number of formerly abandoned lookouts were restored to their original structures and celebrated as part of the 100th anniversary of the BC Forest Service.



BC
FOREST
SERVICE
CENTENARY
1912-2012

This program will continue in the years to come as suitable lookouts and effective partnerships are identified.

Pack it In. Pack it Out!
Please take your garbage with you.
Leave the area cleaner than you found it.
Please stay on designated trails only!

Weather conditions can change extremely fast. Be prepared.
Please be respectful and courteous to everyone you encounter.

Please report all forest fires.
Phone toll-free: 1 800 663 5555

For More Information
www.sitesandtrailsbc.ca



Recreation Sites
and Trails **BC**

Woss Fire Lookout Recreation Site

Visitors Map and Guide



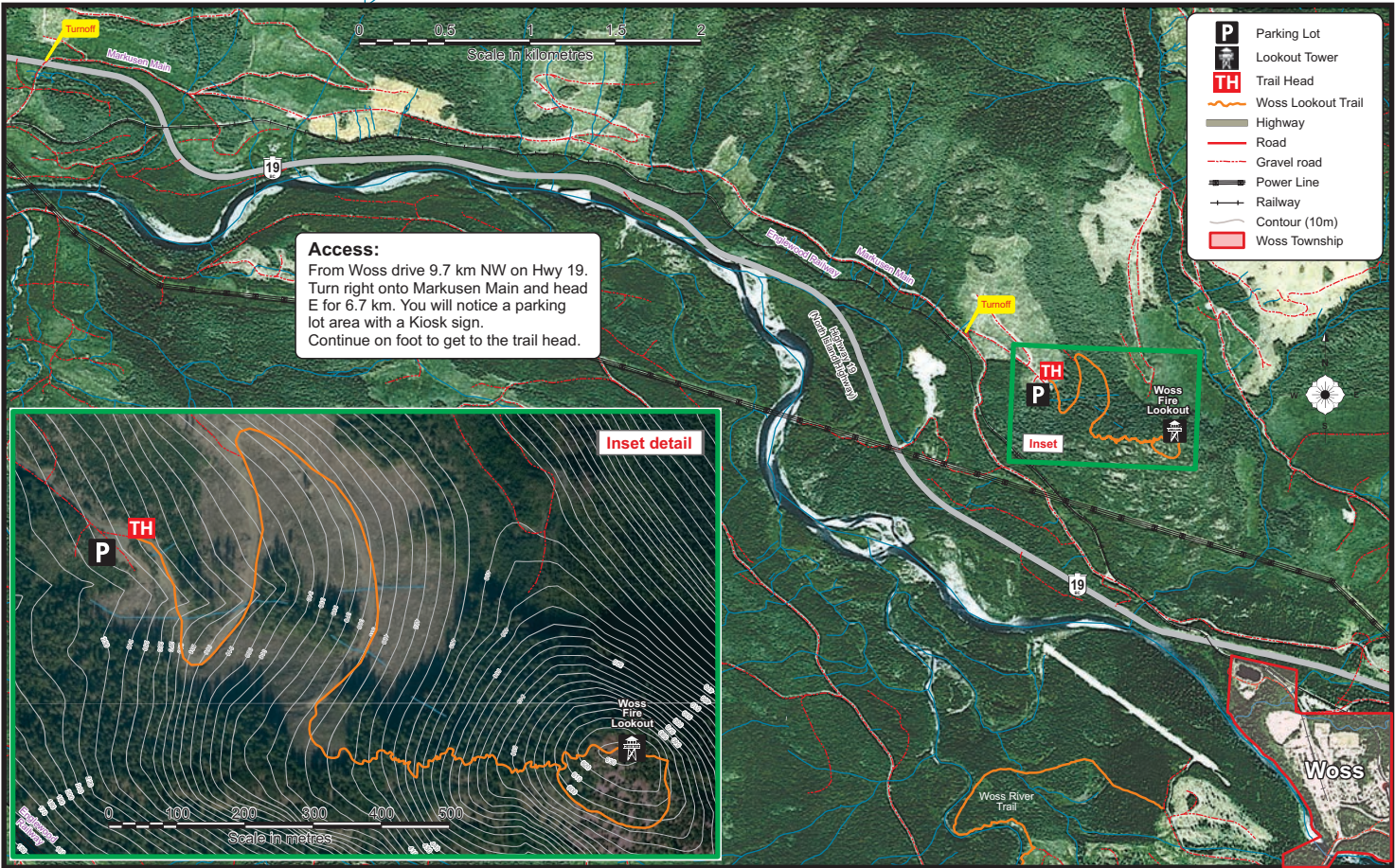
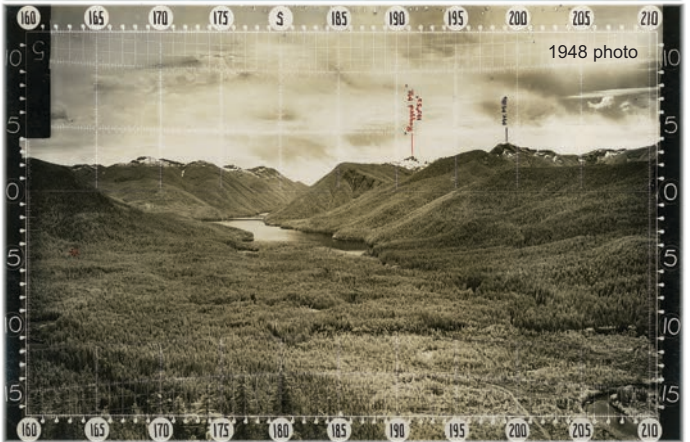
Recreation Sites
and Trails **BC**



Woss Lookout is located at 640 metres (2,080 feet) on the summit of Lookout Mountain – a very prominent hilltop visible to those approaching the community of Woss via Highway 19. The lookout site provides extensive views of the Nimpkish Valley, Woss Lake and the surrounding mountains of the Bonanza Range. The lookout is located within Area 'D' of the Regional District of Mt. Waddington.



Today, forestry operations in the Nimpkish Valley are managed by Western Forest Products Inc. (WFP), who purchased the division from Canfor in 2006. Recent logging activity in the area provided an opportunity to develop and promote a new parking lot and trailhead. This new access point provides a safer alternative to the route previously used, as it prevents the need for the public to cross the active logging railway. High clearance, two-wheel drive vehicles are recommended to access the parking lot. Please drive safely and watch for industrial traffic.



The access trail is very steep and the hike very strenuous. Those that do make the climb are rewarded with panoramic views in all directions, interesting flora and glimpses of the past (remnants of the old tree line telephone system).

The Woss Lookout is one of the few remaining fire lookouts on Vancouver Island. The site has been added to the BC Register of Historic Places.



Funding, in-kind contributions and support for the reconstruction project were provided by the following organizations, companies and volunteers:

- | | |
|--------------------------------------|-------------------------------------|
| Island Coastal Economic Trust (ICET) | Isaac Enterprises Ltd. |
| Western Forest Products Inc. | McElhanney Consulting Services Ltd. |
| Woss Residents' Association | Denise Cook Design |
| Land-Based Investment Strategy | Abernethy Contracting |
| Regional District of Mt. Waddington | Webster Electric Ltd. |
| North Island Heritage Society | E & B Helicopters Ltd |
| Community of Woss | West Coast Helicopters |
| 'Namgis First Nation | |



Ministry of Forests, Lands and Natural Resource Operations:

- Recreation Sites and Trails Branch – Victoria
- Discovery Coast Recreation District – Campbell River
- North Island Resource District – Port McNeill
- Wildfire Management Branch – Coastal Fire Centre – Parksville and Quinsam Fire Base – Campbell River