

Boulder Gardens and Babcock Falls Hiking Trails

The area of Mount Babcock, south of Tumbler Ridge, has excellent hiking opportunities. Four marked trails can be found here, ranging from short hikes below treeline to full day alpine adventures. The focal point of the area is the Core Lodge, a steel shed that has been converted into a day use lodge by the Ridge Riders snowmobile club. This guide covers two of the marked trails in the area.

Directions to the Core Lodge

From Tumbler Ridge, drive south on Highway 52 (the Heritage Highway; the section heading south from town is known locally as the Boundary Road). The paved road passes the turnoff to Kinuseo Falls at km 12.7. Keep going straight on the Heritage Highway for another 6.8 km to a right turn onto the Core Lodge road. This road is radio controlled - watch for industrial traffic. At 12.5 km, there is a fork. Take the right fork, following the sign saying "all other traffic". The left fork is for mine traffic only. From the Heritage Highway, it is 14 km to the Core Lodge.

Boulder Gardens (#35)

Time/Distance: 2-3 hours/4 km return
Rating: Moderate, steep and rocky in places ■

This route leads onto the southeast slopes of Mount Babcock, passing through a landscape of towering rock pinnacles. Some simple rock scrambling is necessary in places. From the Heritage Hwy, travel along the Core Lodge road, then turn to the right at 13.3 km. Go up this road for 1 km to a signed parking lot.

The dome shaped mass of Mount Babcock has been explored for its coal since the 1970's, and Quintette Operating Corporation mined for 3 years on its northwest side. The top of the mountain is composed of a thick bed of resistant sandstone. This has slid on the underlying softer shales. Pieces of the sandstone have broken off, forming a labyrinth of large blocks that is known as the Boulder Gardens.

The circular route is best hiked in a counterclockwise direction. It passes through an other-worldly landscape strewn with rock pillars, slabs, and boulders. There are many cracks and crevices between the rocks, so it is

advised to stick to the trail and supervise children carefully.

There are two short, interesting side trails: the Chimney Rock side trail leads up a narrow but safe chimney to an impressive view site. The Lichen Towers side trail leads into the heart of one of the most spectacular tower areas.

The route then climbs gently to Boulder Tarn, an exquisite small lake nestled in between the bluffs. Pancake Rocks represent a chaotic assemblage of thin-bedded boulders. The Grassi Grind follows the safest route up through a challenging scree and boulder slope. This section ends in a narrow crack. This is the highest point of the circular route, which descends from here through a beautiful dry valley with more views, caves, and boulders.

Babcock Falls (#34)

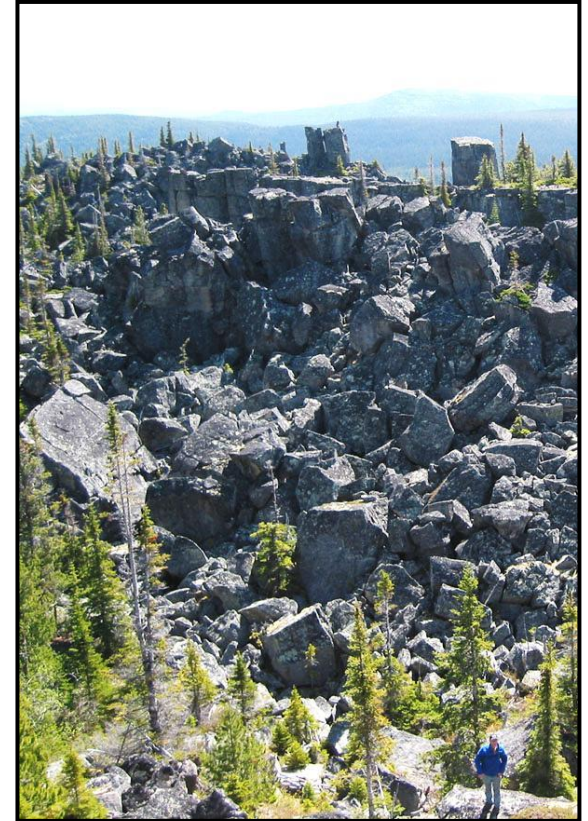
Time/Distance: 1-2 hours/2 km return
Rating: Easy ●

A short trail leads through pine forests and wetlands to 8 metre high Babcock Falls. The wet sections have wooden boardwalks. Some unique wetland flowers are found along the trail.

The trailhead is 200 metres before the Core Lodge. The parking lot is on the left side of the road at km 13.8. The trail crosses a small creek, crosses the mine access road (watch for truck traffic), descends through swampy willow thickets, then joins a reclaimed exploration road and passes into wet subalpine meadows. The tree and plant species found here contrast with those on the drier slopes of the Boulder Gardens.

The developed trail ends overlooking the falls, but a short steep path leads to the pool right at the base of the falls, which are formed from a lip of resistant sandstone. Fossilized logs can be found in these rocks, especially around one small overhang with a good view of the falls.

Boulder Gardens and Babcock Falls Hiking Trails



#35 Boulder Gardens

Rating: Moderate ■

Time: 2-3 hours

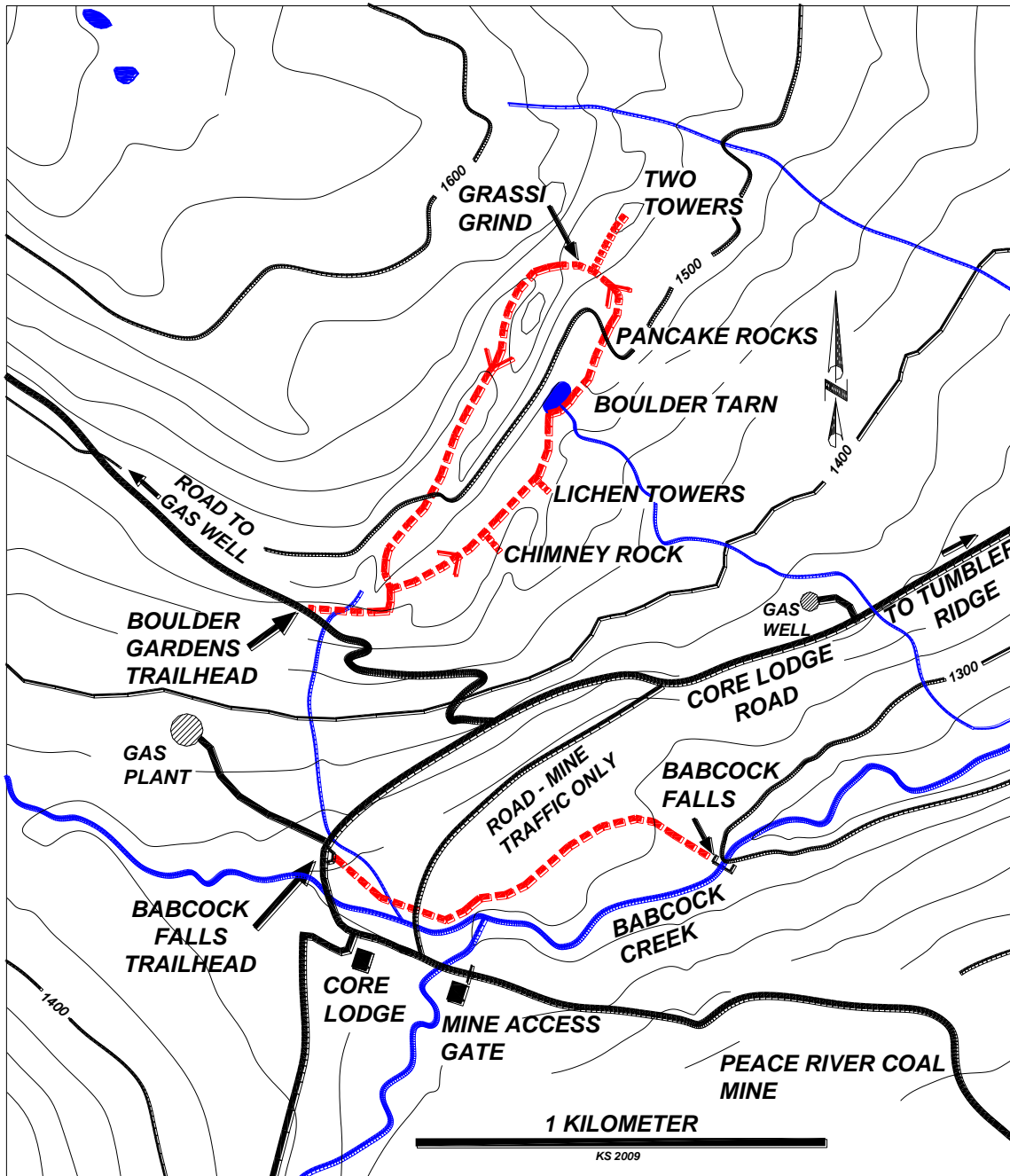


#34 Babcock Falls

Rating: Easy ●

Time: 1-2 hours





Boulder Gardens and Babcock Falls Hiking Trails



Babcock Falls

- ***Use caution near cliff edges***
- ***These trails are in bear country; travel in groups and make noise***
- ***Please pack out what you packed in***

For more information, contact:

Wolverine Nordic and Mountain Society

Charles Helm (250) 242-3984

Kevin Sharman (250) 242-4860

Photo Gallery website: www.wnms.ca

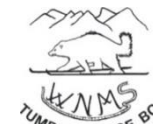
Tumbler Ridge Visitor Centre

(250) 242-3123

Tourism website: www.tumbleridge.ca

Distributed by the District of Tumbler Ridge

Photo Credit: Kevin Sharman



Recreation Sites
and Trails BC



United Nations
Educational, Scientific and
Cultural Organization



Tumbler Ridge
UNESCO
Global Geopark