

Pinnacle Peak Hiking Route

This spectacular and strenuous day hike climbs high into the alpine, following limestone ridges and culminating in an ascent of Pinnacle Peak (1912 metres). Elevation gain is 690 metres. From the peak, one can continue ridgewalking to the south and west. There are views of alpine peaks all around, most of them unnamed.

Note: This is not a developed trail, but rather a route. It is only suitable for strong, experienced hikers with good routefinding skills.

Directions to the Trailhead

From Tumbler Ridge, drive north towards Chetwynd on Highway 29 for 25 km to the turnoff for the former Bullmoose Mine. Follow the Bullmoose mine road for 17 km and turn left onto the Windfall Creek Forest Service Road. This turnoff is just before an electrical substation.

Follow the Windfall Creek road for 23 km. This road climbs over a pass at km 14 and goes by very scenic alpine areas. Turn left at km 23 and follow this side-road for 1.8 km until it ends at a crossing of Windfall Creek, where the bridge has been removed. Cross the creek and follow the deactivated road into a cutblock.

Route Directions

Follow the road up through the cutblock. The start of the flagged route is at the top of the cutblock. A white sign at the edge of the trees marks the start of the route. Follow the flagging as the path climbs through open subalpine fir forest, then through a thicket of stunted krummholz fir. Soon the route breaks

into the open at the bottom of an avalanche chute. Climb up the chute (this section is quite steep), heading for the ridge on the skyline. Watch that you don't dislodge rocks onto those below you.

Once above the chute, the grade eases. Follow the rock cairns, heading south along the ridge. Many wildflowers can be found along this stretch. The bedrock making up the ridge is limestone of the Rundle Group, and is of Mississippian age (350 million years old). Looking back to the north, the mass of Mt. Crum can be seen, with a distinctive fold in its rock layers.

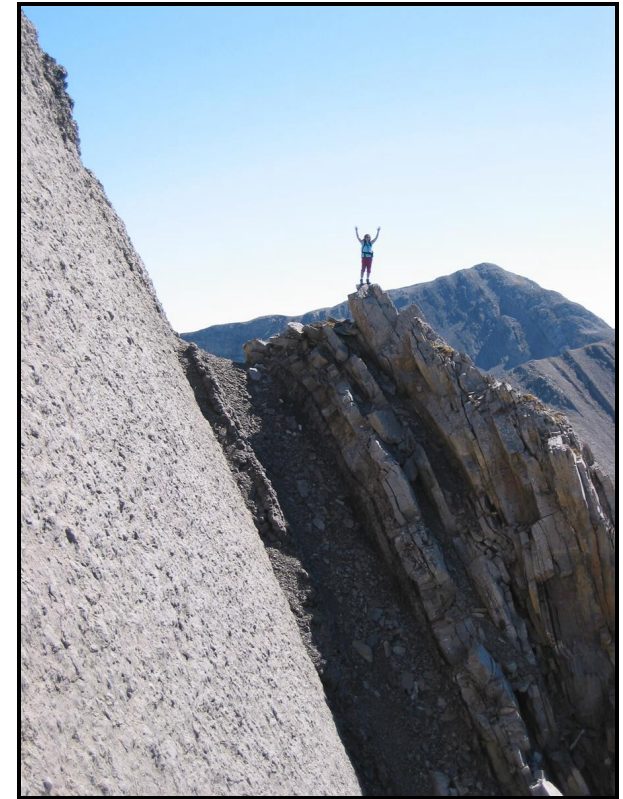
After some up and down travel on the ridge, the dramatic mass of Pinnacle Peak comes into view. It may look impossibly steep from a distance, but can be ascended by following the ridge until it narrows, then moving to the left. Simple scrambling is necessary in a few places. Near the summit, a notch in the ridge reveals a steeply tilted slab with a promontory beside it (cover photo). This is the Pinnacle.

Views from the summit include Mt. Crum to the north and the peaks at the headwaters of Windfall Creek. Windfall Lake is set in lush meadows beneath a rock wall, and the cave near the summit of Tunnel Mountain can be seen to the northeast.

The return trip is best done along the ascent route. The hike can be extended by continuing south from the summit of Pinnacle Peak to an unnamed 2017 metre peak or to an 1865 metre ridgetop to the west, or even to Windfall Lake (see the Windfall Lake brochure). These options are rugged walking but provide first class ridgewalking and more views of the peaks to the south and west.

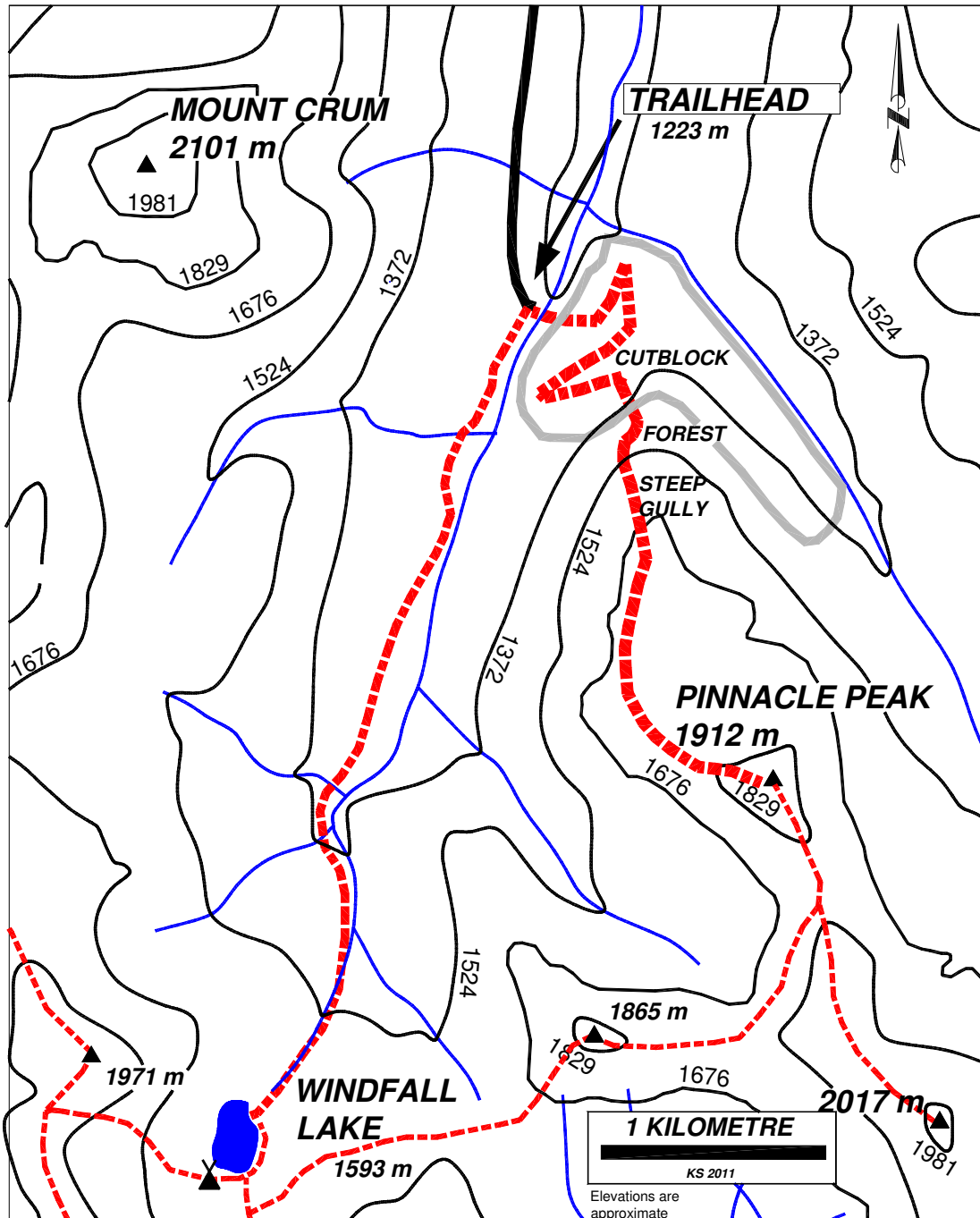
© 2011 Wolverine Nordic and Mountain Society

Pinnacle Peak Hiking Route



***TUMBLER RIDGE... ACCESSIBLE
ADVENTURE***





PINNACLE PEAK HIKING ROUTE

- **THIS ROUTE IS IN BEAR COUNTRY – TRAVEL IN GROUPS AND MAKE NOISE**
- **PLEASE PACK OUT WHAT YOU PACKED IN**
- **ALPINE WEATHER CAN CHANGE SUDDENLY –CARRY APPROPRIATE CLOTHING AND A MAP AND COMPASS**

NTS 1:50,000 map reference:
 93- P/04 Sukunka River
 93- I/13 Sentinel Peak

For more information, contact:

Wolverine Nordic and Mountain Society

Kevin Sharman (250) 242-4860
 Charles Helm (250) 242-3984

Photo Gallery website: www.pris.bc.ca/wnms

Tumbler Ridge Tourist Information Centre
 (250) 242-3123

Tourism website: www.visittumbleridge.ca

© 2011 Wolverine Nordic and Mountain Society
 Distributed by the District of Tumbler Ridge

Photo Credit: Kevin Sharman