

## **Bergeron Cliffs Hiking Trail (#12)**

This rewarding hike leads through aspen and pine forests to the Bergeron Cliffs, a Tumbler Ridge landmark. It provides panoramic views of the Murray River valley, Tumbler Ridge, and the Hart Ranges of the Rocky Mountains.

The trail is a distance of 6 km return and takes 3 to 4 hours. The cliffs hike is rated strenuous, with a steady uphill section. For a full day, this trail may be combined with the Bergeron Falls trail (see map; Bergeron Falls hike also has a separate brochure).

**Warning: This trail has huge unfenced dropoffs at the cliff edges. Children and pets should be supervised.**

Time/Distance: 3-4 hours/6 km return  
Elevation Gain: 400 m (1300 ft)  
Rating: Moderate; a long steady climb ■

### **Directions to the Trailhead**

From Tumbler Ridge, drive north towards Chetwynd on Highway 29 for 6.5 km to a right turn onto a gravel road. The turn is marked with a sign displaying a hiker and '8 km'. Follow this road for 8 km to its end in a large gravel pit. There is a sign at the trailhead.

### **Trail Directions**

From the parking lot, the trail climbs gently through mixed aspen and spruce forests. At 0.6 km, a fork is reached. For Bergeron Cliffs, take the left fork (the right fork leads to Bergeron Falls). A sign here directs the hiker to the left for the cliffs trail. The trail ascends steadily until it levels out on a bench, then resumes climbing until it intersects a cutline.

The cutline is followed for about 300 metres until heading uphill to the right, climbing through aspen forests. Soon the first low cliffs are

reached. The trail passes along a small overhang, and the rock wall here is covered in moss, lichens and ferns.

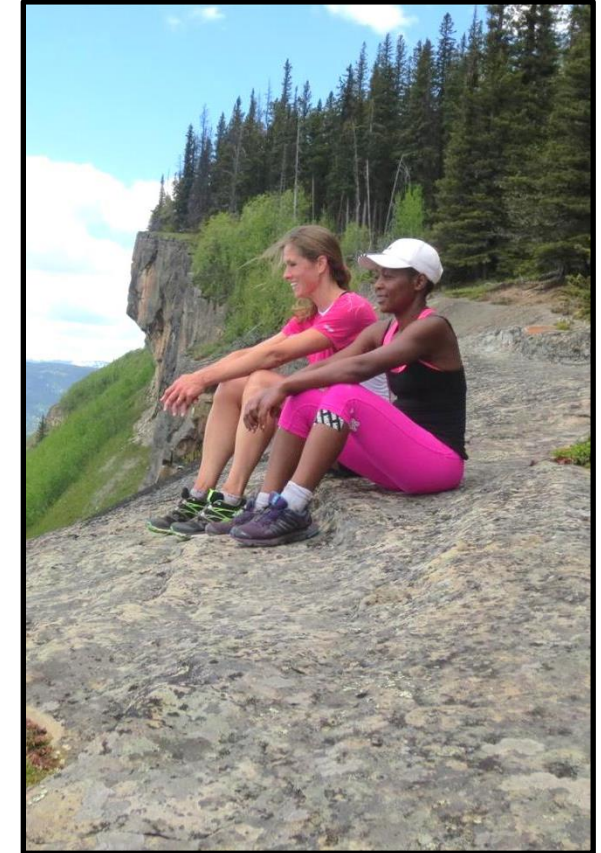
The route mostly follows the cliff edge through the forest from here. Soon it breaks into the open as the cliff becomes higher. Small pine trees grow in cracks in the top of the cliff, and the rock is covered in reindeer lichen and mosses. Please stick to the marked path to avoid trampling this sensitive vegetation. The rock forming the cliff is made of sand that was deposited in an ancient river channel, then hardened into a strong sandstone which is resistant to erosion.

After a short stretch through small closely spaced pine, a result of a past forest fire, the trail breaks into the open again at the main cliffs. A large sign warns not to approach the cliff edge, as it slopes toward the edge here. Excellent views of the Murray and Wolverine river valleys and the mountains to the west can be enjoyed from the safety of a spot set back from the dropoff.

The line of the cliff can be followed for a further 500 metres to even better viewpoints. The trail enters the forest through a more recent burn, then maintains a safe but airy distance from the dropoff as it makes its way along to the trail's end. Looking back on the main viewpoint, it is very apparent why caution is needed – the cliff is overhung, and a fall would be fatal! This is also a good spot to head up the steep grassy slope to the top of Bergeron Ridge. From the trail's end, a long narrow lake can be seen in the forest below.

On the return trip, you can link up with the Bergeron Falls route by heading further along the cutline, following this connector trail to meet up with the trail to the falls.

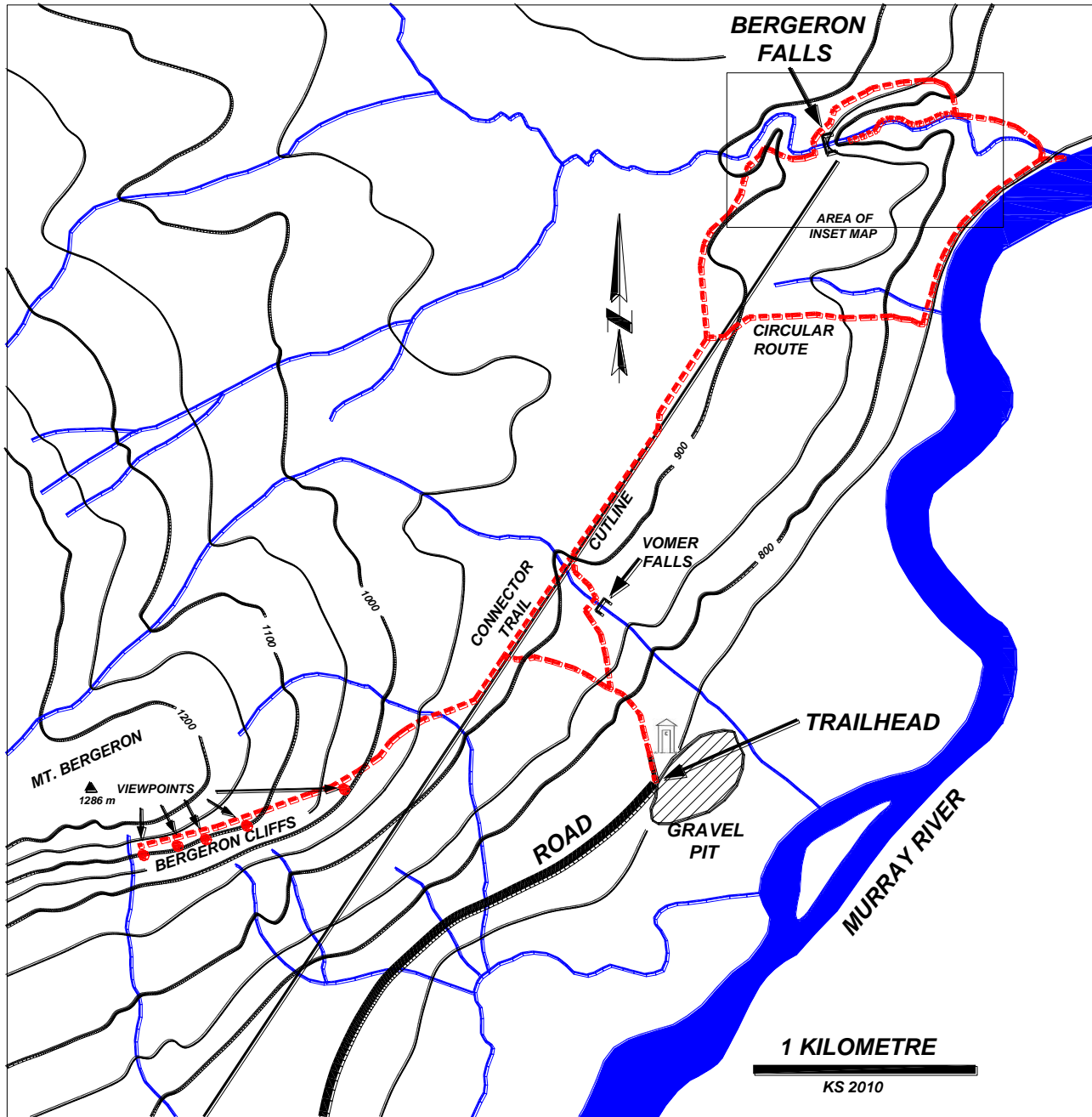
# Bergeron Cliffs Hiking Trail



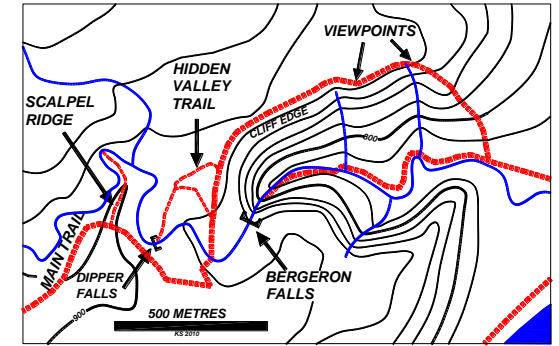
Rating: Moderate ■

Time: 3-4 hours





**Bergeron Cliffs and Bergeron Falls Trails**



**Inset Map of Falls Area**

- **Use extreme caution near cliff edges**
- **This trail is in bear country; travel in groups and make noise**
- **Please pack out what you packed in**

For more information, contact:  
**Wolverine Nordic and Mountain Society**  
 Charles Helm (250) 242-3984  
 Kevin Sharman (250) 242-4860

Photo Gallery website: [www.wnms.ca](http://www.wnms.ca)

**Tumbler Ridge Visitor Centre**  
 (250) 242-3123

Tourism website: [www.tumblrridge.ca](http://www.tumblrridge.ca)

Distributed by the District of Tumbler Ridge  
 Photo Credit: Birgit Sharman



Recreation Sites  
and Trails BC



United Nations  
Educational, Scientific and  
Cultural Organization



Tumbler Ridge  
UNESCO  
Global Geopark