

Bergeron Falls Hiking Trail (#13)

This very rewarding hike leads to Bergeron Falls, one of the highest waterfalls in northern B.C. The falls plunge 100 metres over a sandstone lip into a spectacular horseshoe shaped bowl. Hiking to the top of the falls and back involves a distance of 8.8 km return, takes 3 to 4 hours, and is moderately strenuous. The circular route, completed in 2010, is more strenuous (although rope hand-lines have been placed to help hikers through the steeper parts), and longer (11 km including the side-trail to the base of the falls). It is highly recommended. It has much more varied scenery, leads to both the bottom and the top of the falls, and includes impressive riverside, knife-edge and canyon sections. There are signs marking each kilometer.

Warning: This trail has huge unfenced dropoffs. Children and pets should be closely supervised. Three creek crossings (impassable during floods) are required to reach the base of the falls.

Time/Distance: 4-5 hours/11 km circular route
Elevation Gain: 365 m (1200 ft)
Rating: Moderate, several long climbs ■

Directions to the Trailhead

From Tumbler Ridge, drive north towards Chetwynd on Highway 29 for 6.5 km to a right turn onto a gravel road. The turn is marked with a sign displaying a hiker and '8 km'. Follow this road for 8 km to its end in a large gravel pit. There is a sign at the trailhead.

Trail Directions

From the parking lot, the trail climbs gently through mixed aspen and spruce forests. At 0.6 km, a fork is reached. For Bergeron Falls, take the right fork (the left fork leads to the Bergeron Cliffs). The trail climbs steadily until it levels out on a bench. Just before 1.0 km, Vomer Creek is reached. This stream has a small waterfall, which can be seen by heading 10 metres off the main trail. Shortly after passing the falls, the trail follows a long cutline through the forest.

At km 2.2 a major junction is reached. Keeping left leads to the top of the falls and viewpoints, 2 km further on. First it passes through an interesting forest of small pine trees in an old burn area. This is mostly level hiking except where the trail descends to cross Bergeron Creek via an aluminum footbridge. Be aware that there is a huge waterfall downstream. The trail then ascends and approaches the edge of the cliff, leading to spectacular viewpoints of Bergeron Falls. A barrier has been placed at the old first viewpoint to keep hikers away from the unstable cliff edge. For hikers wishing just to see the

falls from the top, continue to the last viewpoint bench, but do not descend further.

Keeping right at the km 2.2 junction is the recommended direction of travel for the Circular Route (see map). After a level section this trail descends steadily until it crosses a clear, spring-fed creek before coming out on a cliff bank overlooking the Murray River. Close by is a historic pack trail that leads down to the river. The trail then edges along the top of bluffs (stay away from the cliff edge), with great views of the river below, before passing along and then descending a spectacular knife-edge ridge (km 4), which leads to river level. Painted stakes and flagging tape mark the way across a gravel bar at the mouth of Bergeron Creek. The creek crossing here may be impassable during high water levels. The trail then re-enters the forest.

Soon there is an important junction. Keeping left leads along a dramatic, rough route beside the creek through a scenic slot canyon. This involves rock scrambling and ledges, and is only feasible during times of low water.

To avoid the canyon section, keep right at the junction, ascend for 200 metres, and take the trail to the left that leads to the base of the falls. There are three compulsory creek crossings. The spectacular view at the base of the falls is reached at 5.5 km. Look for mountain goats on the canyon walls. After returning along this trail onto the Circular Route, there is a relentless climb until the upper viewpoints of the falls are reached.

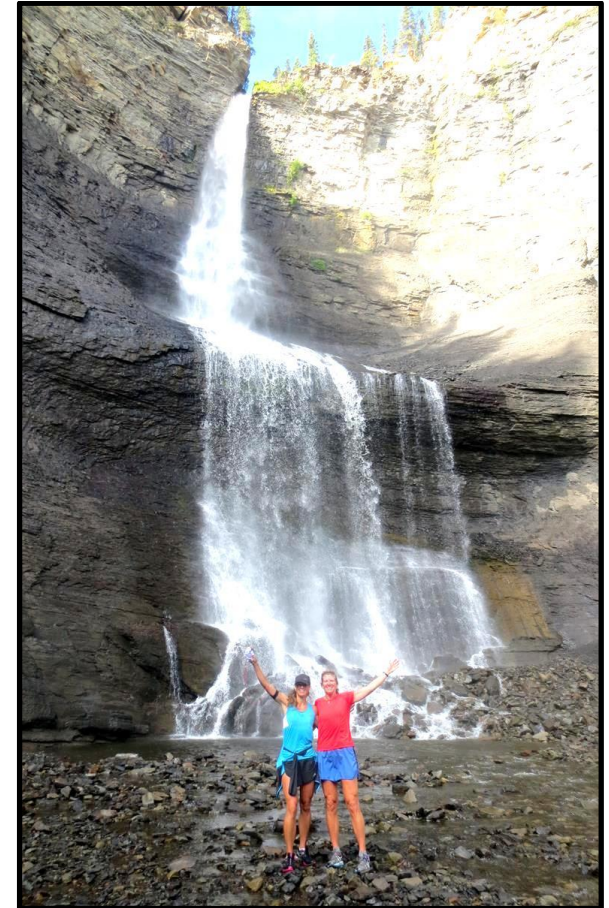
There are a number of other fascinating features in the area just above the falls. A favourite is the side-trail to Hidden Valley, a dry, cool, mossy, steep-sided, linear cleft that parallels the main cliff edge. An offshoot from the Hidden Valley trail leads to the bottom of Dipper Falls, a small waterfall in attractive rocky surroundings on Bergeron Creek. Scalpel Ridge is another side-trail from the main trail: it follows a narrow knife-edge ridge before descending to a bench in the forest beside the creek.

Bergeron Creek is one of the many tributaries of the Murray River that enter the river valley with waterfalls. These creeks cut their channels after the ice retreated from the Murray River following the last glaciation.

On the return trip back to the trailhead, one may extend the hike by visiting the Bergeron Cliffs: head further along the cutline at km 10.5, and follow this connector trail to meet up with the trail to the cliffs. The trail climbs steadily, coming out on top of the cliffs and following along them, with great views. The Bergeron Cliffs hike has its own separate brochure.

© 2016 Wolverine Nordic and Mountain Society

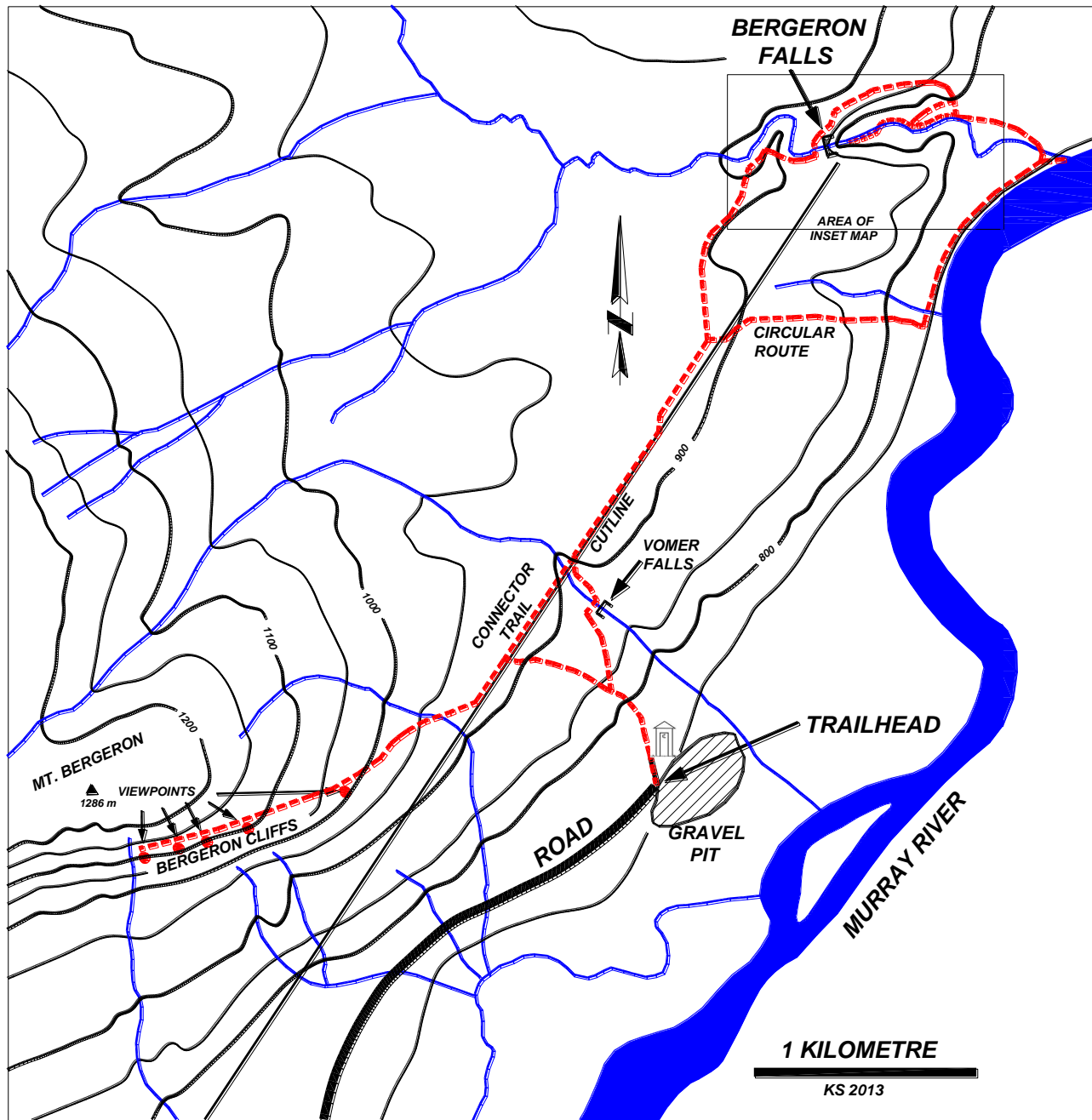
Bergeron Falls Hiking Trail



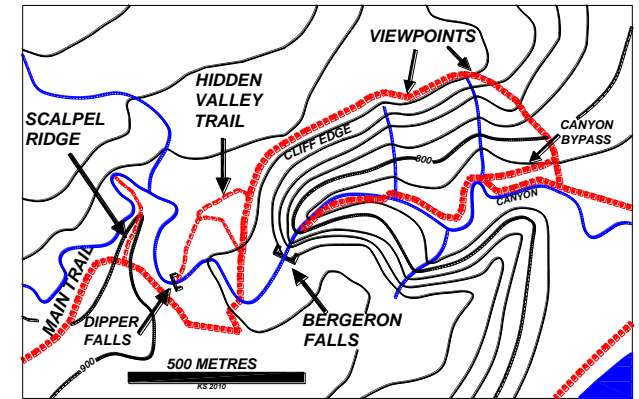
Rating: Moderate ■

Time: 4 - 5 hours





Bergeron Falls and Bergeron Cliffs Trails



Inset Map of Falls Area

- Use extreme caution near cliff edges
- Do not throw rocks over cliff edges, as hikers may be below
- Maximum 2 people at a time on bridge above falls
- This trail is in bear country; travel in groups and make noise
- Please pack out what you packed in

For more information, contact:

Wolverine Nordic and Mountain Society

Charles Helm (250) 242-3984

Kevin Sharman (250) 242-4860

Photo Gallery website: www.wnms.ca

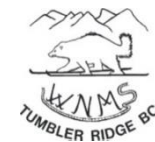
Tumbler Ridge Visitor Centre

(250) 242-3123

Tourism website: www.tumbleridge.ca

Distributed by the District of Tumbler Ridge

Photo Credit: Vanessa Smith



Recreation Sites
and Trails BC



United Nations
Educational, Scientific and
Cultural Organization



Tumbler Ridge
Global Geopark