

Mount Spieker Hiking Routes

The Mount Spieker area offers excellent wide open alpine hiking close to Tumbler Ridge. Access is via a gravel road to a gas well, with old coal exploration trails taking the hiker to the alpine. Once in the open, there are many choices for a half day or full day adventure. The hikes are rated moderate.

Note: These are not developed trails, but rather routes. They are only suitable for experienced hikers with good routefinding skills. Windy and foggy conditions can occur without warning.

Directions to the Trailhead

From Tumbler Ridge, drive north towards Chetwynd on Highway 29 for 8.8 km to the turnoff for the Wolverine Forest Service Road. This is a radio controlled road (frequency 153.020 MHz) and there can be industrial traffic from Western Coal's Wolverine Mine. The mine development has affected access to the trailhead. To gain access, go to the mine gate at km 17 on the Wolverine road. Ask at the security building for an escort through the mine. This will take you through the mine and onto the Perry Creek road. It is advisable to call the mine at (250) 242-6000 the day of your hike to arrange an escort. Be aware that the mine roads (and the Perry Creek road) are not suitable for cars.

Follow the Perry Creek road as it heads up the valley. There are junctions at the 10.2 km and 12 km marks – take the right fork at the first one and the left fork at the second one. The final junction is at 13.7 km. Take the right fork at this one, and follow the road to its end at a large clearing with a gas well.

Route Directions

The hike starts by ascending along an old exploration road to the saddle that is north of the well. This road switchbacks up, climbing steadily until it reaches the saddle, with good views in all directions.

From the saddle, there are three choices for alpine hiking: southwest, east, and north.

To the southwest lies a short hike up the ridge adjacent to the saddle, along an animal path tailor made for hikers. The last stunted trees are left behind, and low thickets of scrub birch give way to true alpine vegetation such as mountain avens, moss campion, and grasses. The summit of the ridge is a good place to view the former Bullmoose mine, which is returning to wildlife habitat as reclamation takes hold. The high peak to the south is Mount Reesor (2043 m), another good choice for a day hike.

The actual summit of Mt. Spieker (1971 m) lies to the east, along a gentle 4 km long alpine ridge. The skyline of this ridge can be seen from Tumbler Ridge. Wildflowers bloom in profusion in July and August here, and many marmots make their homes among the rocks. The area is known for birds such as ptarmigan and golden eagle, and caribou are often spotted in the alpine.

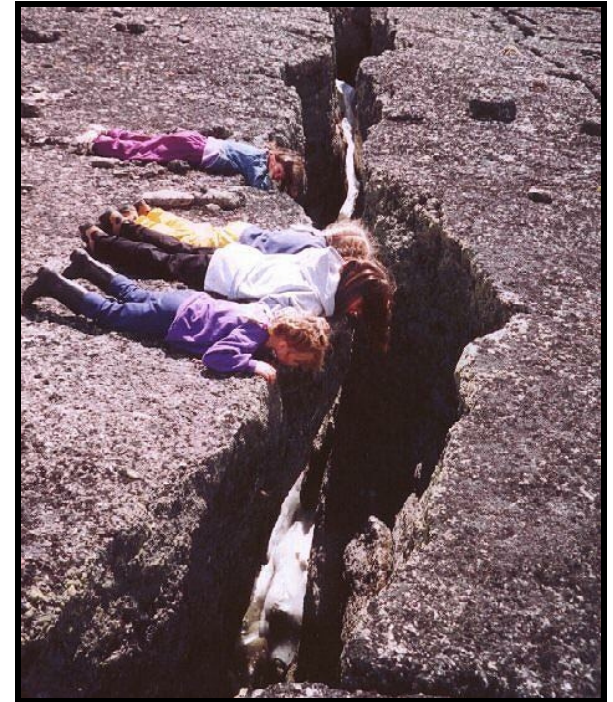
Perhaps the most interesting scenery can be found on the northern leg. Views in all directions, small tarns, and an assortment of rock scenery keep hikers entertained as they walk to the end of the ridge. A most unusual feature called the Playpen is found midway along the route, where intersecting rock walls form a low corral for young children.

The ridge is bounded by cliffs on its east and west sides. The thickly bedded sandstone and conglomerate of these cliffs is broken by deep cracks and fissures, in which snow can be found even in late summer. The ridge narrows to the north, until it squeezes down to a narrow strip dubbed the Neck. This has an impressive pattern of intersecting cracks. Below the cliffs on the east side are two small lakes.

The hiker can continue to the north to a fine viewpoint overlooking the valley of Bullmoose Creek. Across the valley to the north, the bulk of Bullmoose Mountain (2040 m) can be seen. Those with binoculars may spot mountain goats on the south slopes of the peak.

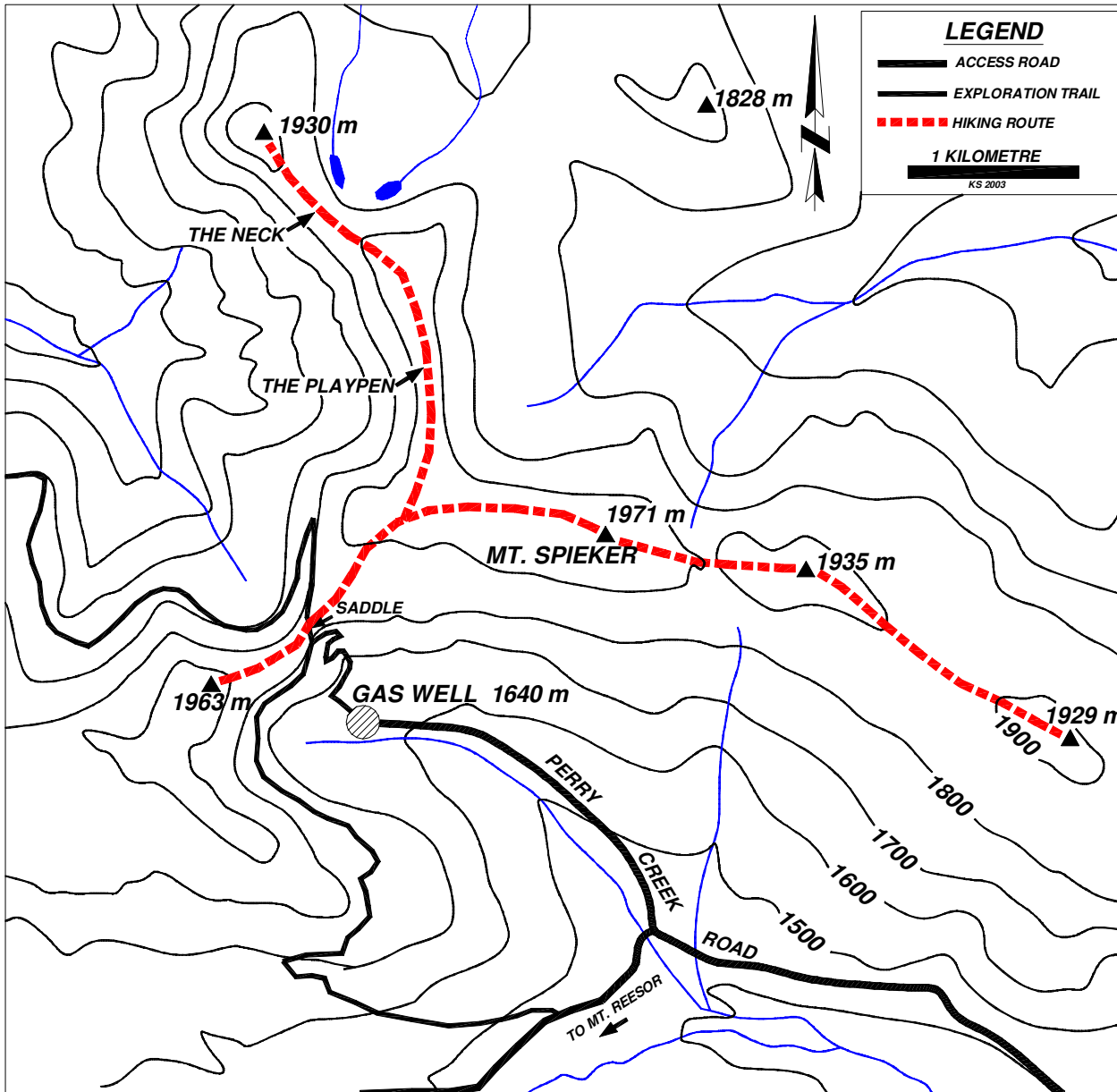
© 2010 Wolverine Nordic and Mountain Society

Mount Spieker Hiking Routes



**TUMBLER RIDGE... ACCESSIBLE
ADVENTURE**





MOUNT SPIEKER HIKING ROUTES

- **THIS ROUTE IS IN BEAR COUNTRY – TRAVEL IN GROUPS AND MAKE NOISE**
- **PLEASE PACK OUT WHAT YOU PACKED IN**
- **ALPINE WEATHER CAN CHANGE SUDDENLY –CARRY APPROPRIATE CLOTHING AND A MAP AND COMPASS**

NTS 1:50,000 map reference:
93- P/03 Bullmoose Creek

For more information, contact:

Wolverine Nordic and Mountain Society

Kevin Sharman (250) 242-4860
Charles Helm (250) 242-3984
Fred Walkley (250) 242-4958

Photo Gallery website: www.pris.bc.ca/wnms

Tumbler Ridge Visitor Information Centre

(250) 242-3123

Tourism website: www.tumlerridge.ca

© 2003 Wolverine Nordic and Mountain Society

Distributed by the District of Tumbler Ridge

Photo Credit: Kevin Sharman