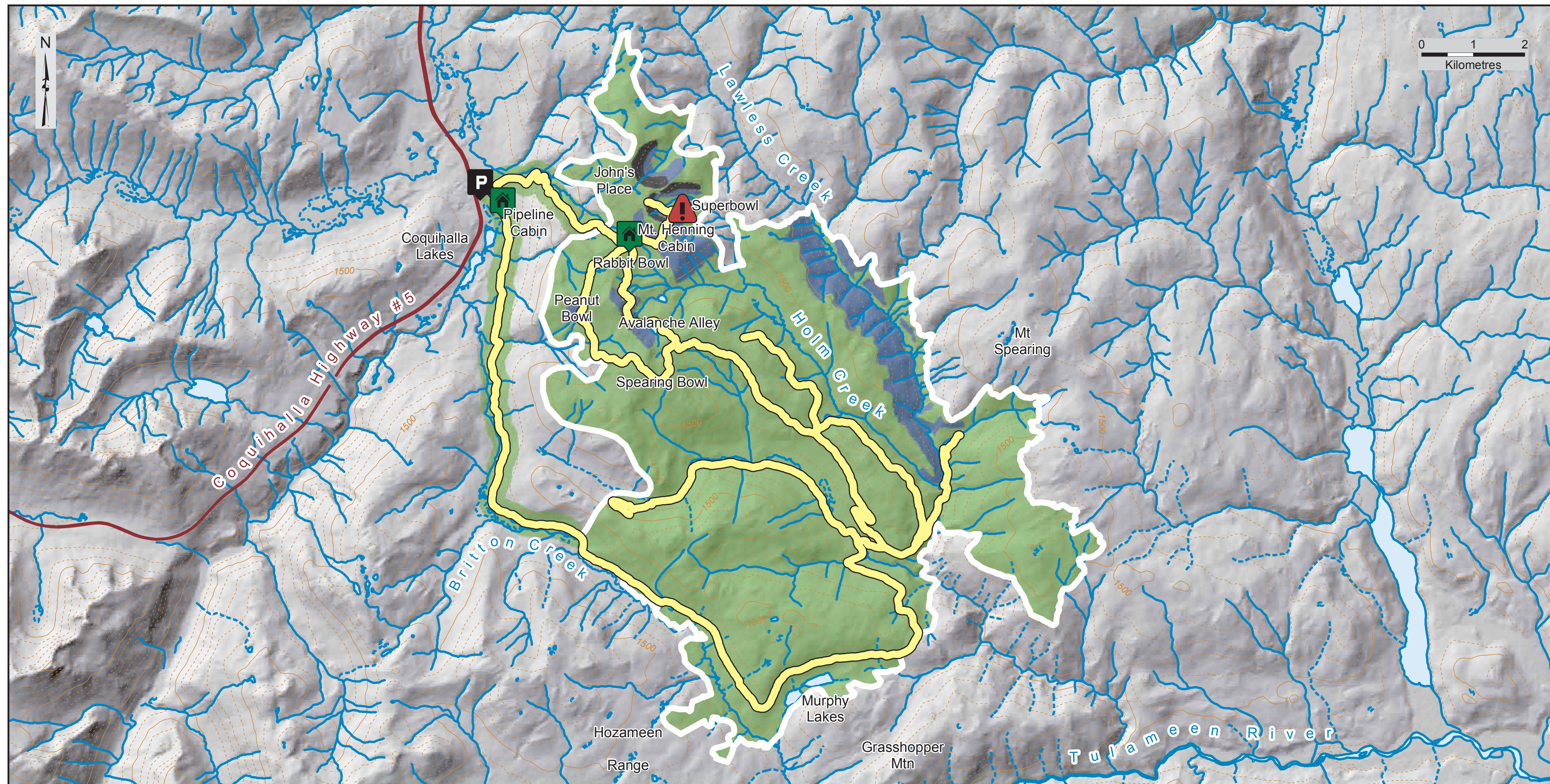


YOU ARE HEADING INTO AVALANCHE TERRAIN

1. What type of terrain are you heading into?



AVALANCHE TERRAIN RATINGS

- SIMPLE**
Exposure to low angle or primarily forested terrain. Some forest openings may involve the runout zones of infrequent avalanches. Many options to reduce or eliminate exposure. No glacier travel.
 - CHALLENGING**
Exposure to well defined avalanche paths, starting zones or terrain traps; options exist to reduce or eliminate exposure with careful route finding. Glacier travel is straightforward but crevasse hazard may exist.
 - COMPLEX**
Exposure to multiple overlapping avalanche paths or large expanses of steep, open terrain; multiple avalanche starting zones or terrain traps below; minimal options to reduce exposure. Complicated glacier travel with extensive crevasse bands or icefalls.
- CABIN** **AVALANCHE PATH**
DECISION POINT **ROAD/TRAIL**
PARKING **TERRAIN RATED**

Note: Because of scale some of the areas classified have been generalized. For high resolution interactive digital maps check out the Online Trip Planner at www.avalanche.ca/cac

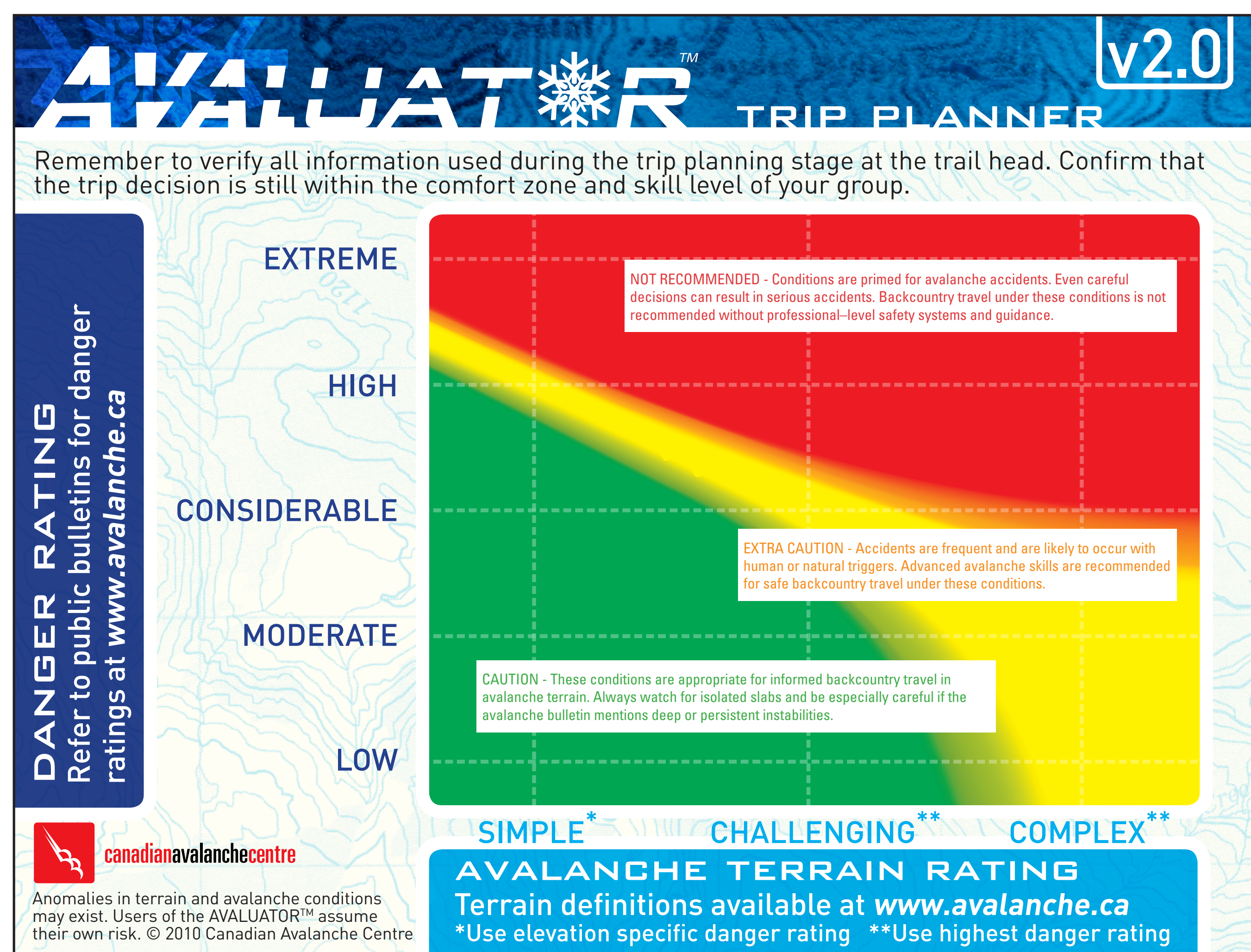
2. What is the Avalanche Danger Rating today?

Where can I access today's forecast? 1-800-667-1105, select number for North Columbia >> Cariboo.

Danger Level		Travel Advice
5 Extreme		Avoid all avalanche terrain.
4 High		Very dangerous avalanche conditions. Travel in avalanche terrain not recommended.
3 Considerable		Dangerous avalanche conditions. Careful snowpack evaluation, cautious route-finding and conservative decision-making essential.
2 Moderate		Heightened avalanche conditions on specific terrain features. Evaluate snow and terrain carefully; identify features of concern.
1 Low		Generally safe avalanche conditions. Watch for unstable snow on isolated terrain features.

3. What does the Avaluator recommend?

Combine the danger and terrain ratings on the Avaluator chart to manage risk.



- Have you told a responsible person your trip plans?
- Is everyone in your group properly dressed and equipped with a transceiver, probe and shovel?
- Do you have any backcountry knowledge or avalanche awareness training?
- For more information go to: www.avalanche.ca



Warning: Mountain travel is dangerous –hazards exist. Spotting hazards and assessing their risk is your responsibility. Decision guides like the Avaluator cannot eliminate these hazards, but will help you understand and manage them. The Avaluator is no substitute for training, experience, and choosing skilled and responsible travel partners. Use the Avaluator and the information on this sign at your own risk. Travel the back country at your own risk.

Terrain Assessment Maps Warning:
This map is illustrative only and should not be used to determine precise routes or location of features. The terrain ratings shown are an approximation and may assist with trip planning. Use the information provided on this map at your own risk.