

Trail Etiquette

- All trails are two way.
- Please ski on the right
- Please fill your sitz-marks
- Skaters: please avoid the classic tracks
- Snowshoeing? a map of snowshoe trails is available at the trailhead
- Dogs are not allowed on the trails in ski season; a dog trail is available
- No walking on the trails
- If trail grooming is in progress, please don't ski on the fresh tracks; wait for 30 minutes or take another route.

Trails are closed to vehicles all year except for maintenance work

The trail map and additional support was provided by Sage Orienteering Club of Kamloops

www.oabc.ca/sage



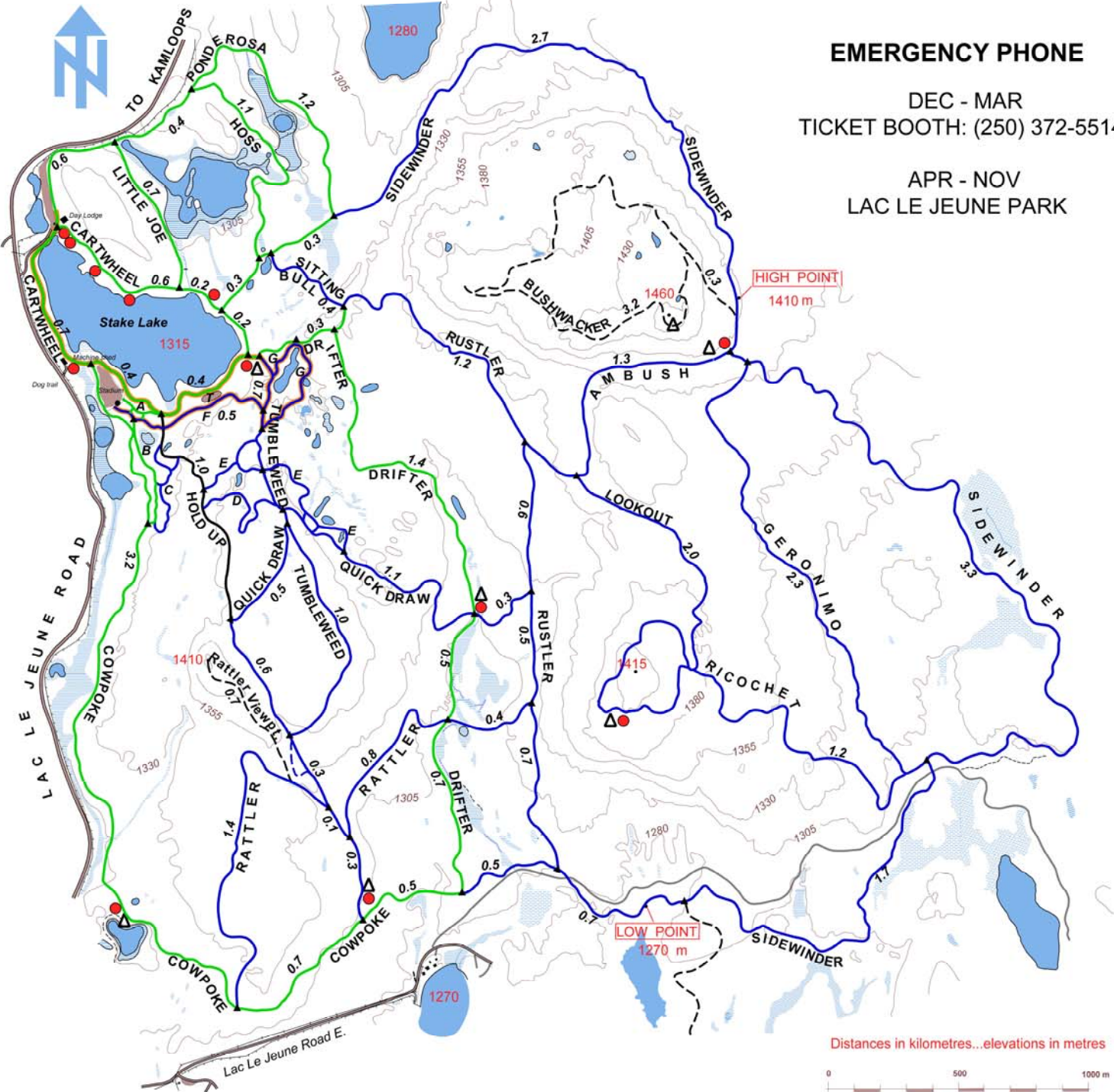
Welcome to Stake Lake Ski Trails

The trails are operated by the **Overlander Ski Club** of Kamloops from November to March under an operating agreement with Recreation Sites and Trails BC. Trail fees are used to provide visitor facilities, trail grooming, snow removal and special events. This is our 21st year of operations.

December 2011

Stake Lake Snow Phone:
250-372-5514

www.overlanderskiclub.com



EMERGENCY PHONE
 DEC - MAR
 TICKET BOOTH: (250) 372-5514

APR - NOV
 LAC LE JEUNE PARK

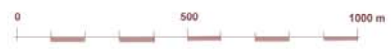
Legend

- Novice trail
- Novice trail - lit
- Intermediate trail
- Intermediate trail -lit
- Advanced trail
- Backcountry trail:
... not track set
- Trail Map locations
- Shelter
- Toilet
- Terrain Park

	CARTWHEEL	2.6 km
	COWPOKE	4.8 km
	DRIFTER	3.0 km
	HOSS	1.1 km
	LITTLE JOE	0.6 km
	PONDEROSA	2.8 km
	A RAWHIDE	0.2 km
	B OUTLAW	0.3 km
	GERONIMO	2.2 km
	QUICK DRAW	2.0 km
	AMBUSH	1.2 km
	LOOKOUT	2.0 km
	RICOCHET	1.2 km
	RATTLER	2.9 km
	RUSTLER	3.0 km
	SIDEWINDER	8.7 km
	TUMBLEWEED	2.4 km
	SITTING BULL	0.5 km
	C BRONCO	0.5 km
	D SNAKEBITE	0.5 km
	E SHOWDOWN	0.7 km
	F ELDORADO	0.7 km
	G LASSO	0.6 km
	BUSHWACKER	3.5 km
	HOLD UP	1.7 km
	RATTLER VIEWPT.	0.7 km

EMERGENCY LOCATOR NUMBERS AT EACH TRAIL JUNCTION: provide number when informing staff about emergency

Distances in kilometres...elevations in metres



Map updated Oct 2011